

# CLINICAL And EXPERIMENTAL HOMEOPATHY

A peer-reviewed International Online EJournal

ISSN 0974 - 9799

<http://journal.sukulhomeopathy.com>



January 2017; 4: 1: 2017

## **Cancer and Homeopathy**

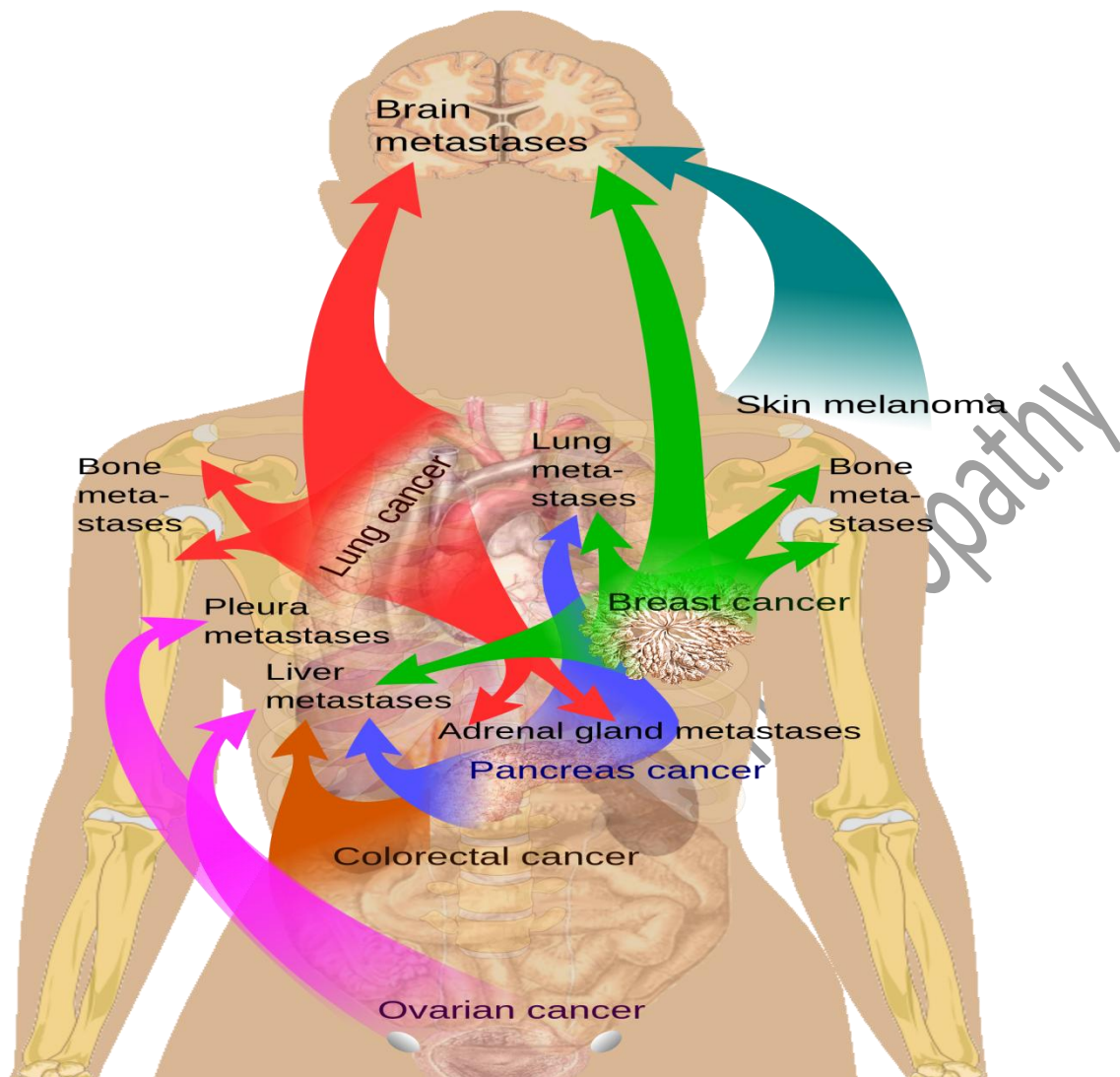
*Dr. Deepak Dass, BHMS (CU)*

*dr.deepaklive@gmail.com*

Cancer or malignant tumour is a group of disease involving abnormal cell growth with potential to invade or spread to other parts of body.

It is a systemic disease and not a local pathology of cells or tissues as considered by the modern system of medicine where the treatment is based on the local pathology of the system or the parts in terms of Radiotherapy, Chemotherapy or Surgery or in other terminology we can sum up as burning of the area (Radiotherapy), poisoning the tissues (Chemotherapy) and removal of the areas involved with cancerous affection (Surgery) – and in doing so nothing changes to the aspects of CANCER

As it keep on spreading in its own fixed direction as illustrated in the figure



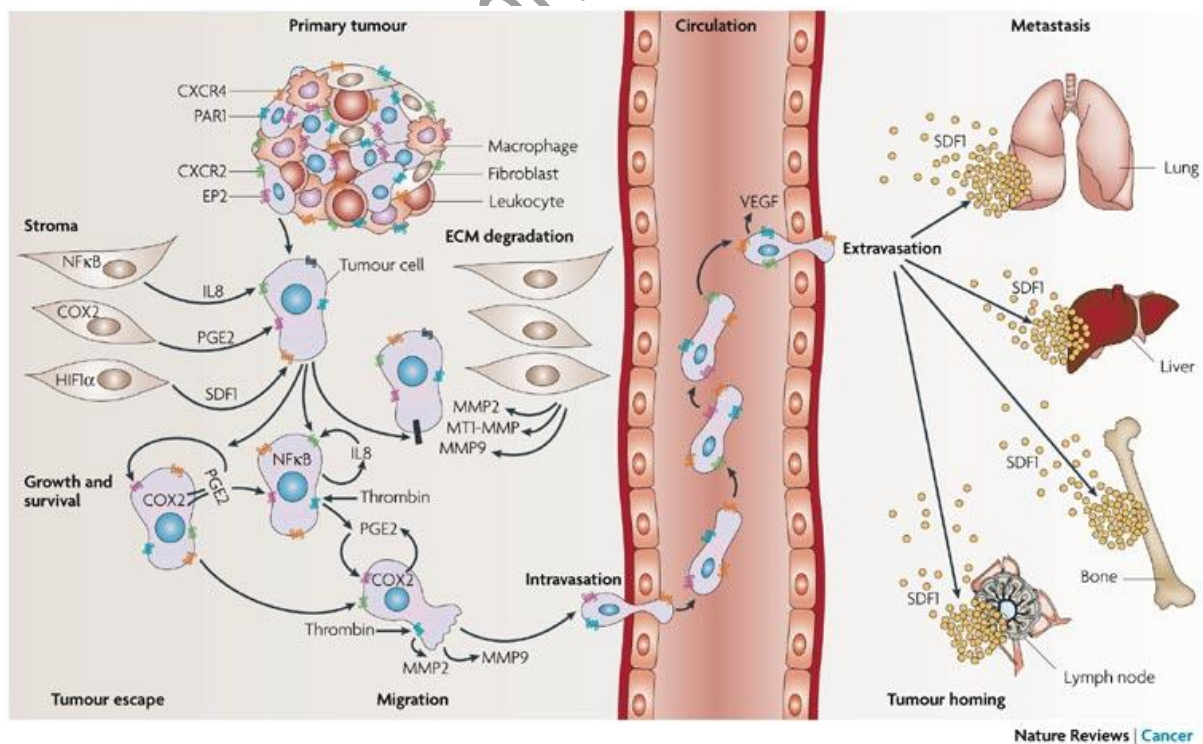
**General Signs & symptoms:**

- Unexplained weight loss
  - Fever – mild to continuous
  - Fatigue
  - Pain – mild continuous to severe unbearable
  - Skin changes – Hyper pigmentations, reddened, shallow, excessive hair growth or hair loss
  - Altered bowel habits – diarrhoea and severe constipations
  - Changed bladder functions
  - Infections / sores taking longer time to heal
  - White patches inside mouth or tongue
  - Unusual bleeding / Uncontrolled bleeding
  - Unusual discharges
  - Lump / thickening in different parts of body
-



## The Metastatic Process:

The metastasis occurs in a very artistic way with a strong affinity to a particular part or the target organs and not affecting any desired part of the body of its own. The cancerous cells once developed in the primary site of lesion finds its way through the circulating channels and gets localized on the target organs like brain, lungs, bones, liver, lymph nodes etc. Where they form new lesions identical to the primary focus and termed as secondary or metastatic lesions which is equally the same as the primary focus. Its often seen in clinical practice that once the primary lesion is removed or radiated out and in due course of time and under favourable circumstance the secondary grows in the system as the primary lesion and the subject remains unaware of it till it develops as full blown symptoms and pathology.



# CLINICAL And EXPERIMENTAL HOMEOPATHY

A peer-reviewed International Online EJournal

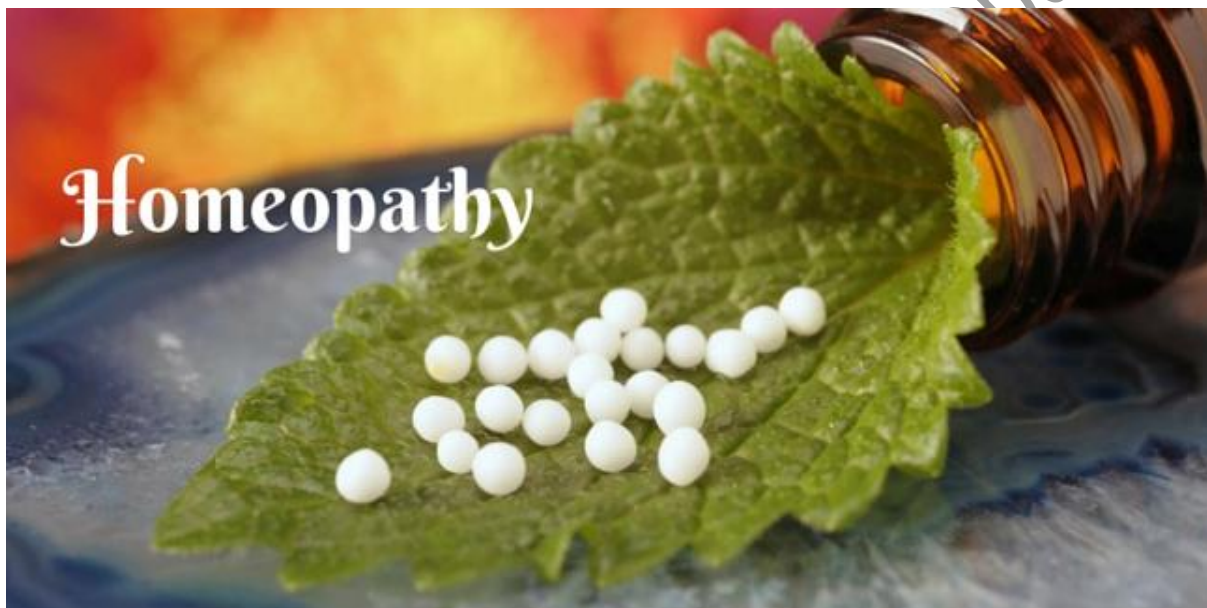
ISSN 0974 - 9799

<http://journal.sukulhomeopathy.com>



January 2017; 4: 1: 2017

## Effectiveness of Homeopathy in the treatment of cancer:



The effectiveness of the medicine lies in the curative properties of the medicines so chosen for the case its nature its sphere of action its intensity and duration of action and so on. Which help a physician to guide its proper regulation in suitable time as per the symptomatology demands.

There are many incidence and places where Homeopathy is used as and alternative medicine for treatment of Cancers where the main treatment is Allopathic regimen. However worldwide there has been much evidence and literatures in support to cure Cancers of different type alone with Homeopathic treatment in which the correct homeopathic recommendation resulted in the resolution of tumours, reversal of the cancer process, and recovery of the patient.

Much of the success in treatment purely depends on the skill level of the practitioner and the resources of the patient to heal on all levels including structural, functional and miasmatic levels.

# CLINICAL And EXPERIMENTAL HOMEOPATHY

A peer-reviewed International Online EJournal

ISSN 0974 - 9799

<http://journal.sukulhomeopathy.com>



January 2017; 4: 1: 2017

## **Pathological Tests (Tumor Marker):**

AFP → CA. Liver, CA Ovary, CA Testis

ALK Gene → Non-specific small cell lung cancer

B-Cell Immunoglobulin → B-Cells Lymphoma

B2M → Multiple Myeloma, CLL, Lypoma

BCR-ABL → ALL, CML

CA-15.3 → Ca. Breast

CA-19.9 → Ca.Pancreas, Ca.Colon, Ca.Gallbladder, Ca.stomach

CA-125 → Ovarian Cancer

Calcitonin → Medullary Thyroid Carcinoma & C- Cell Hyperplasia

CEA → Colorectal Ca. Pancreatic Ca, Lung Ca. Breast Ca, Ovarian Ca.

Chromogranin A → Neuroendocrine Tumors, Neuroblastoma

DCP → HCC

EGFR → Non-small cell lung Ca.,

ER/ PR → Ca.Breast

Gastrin → Gastrinoma, G-Cells Hyperplasia

HCG → Germ Cell Tumor

HER2/NEU → Ca.Breast

JAK2 Mutation → Leukaemia

KRAS Mutation → Colorectal Ca, Non-small cell lung Ca.

# CLINICAL And EXPERIMENTAL HOMEOPATHY

A peer-reviewed International Online EJournal

ISSN 0974 - 9799

<http://journal.sukulhomeopathy.com>



January 2017; 4: 1: 2017

LD → Testicular and Germ cell Tumors

Monoclonal Immunoglobulins → Multiple Myeloma

PSA → Ca.Prostate

T-Cells Receptors Gene Rearrangements → T-Cell Lymphoma

Thyroglobulin → Ca.Thyroid.

## **The Treatment Concordat:**

There are several approaches to treat a cancer and very often Homeopaths use combination of approaches.

The ideal approach must include a targeted treatment strategy to first control the further progression of the disease condition in terms of growth of the primary tumour (Cancerous lesion) where metastasis is not into play.

And when metastasis is under progression then to combat the growth of the metastatic lesion as well.

Secondly to limit the growth of the lesions and its further spread in the system in due course of time and treatment.

Then comes the regression of the lesion both primary and secondary in the system.

## **Homeopathic Remedies for Cancer:**

There are certain remedies which have great affinity in the treatment aspect of cancer few have been casted as under:

Leukemia – Nat-ars, Nat-s, Picric Acid, Symphy, Hecla Lava, X-Ray

Oestosarcoma – Calc-Flour, Calc-Phos,

Melanoma – Carcinocin, Ars-brom,

# CLINICAL And EXPERIMENTAL HOMEOPATHY

A peer-reviewed International Online EJournal

ISSN 0974 - 9799

<http://journal.sukulhomeopathy.com>



January 2017; 4: 1: 2017

Astrocytoma – Baryta-c, Carc, Plb-i, Aethuja, syph

Ependymoma – Calc, Gels, Plumb, Zinc

Glioma (GBM) – Bar-c, Caust, Plb-i, Carc.

Pancreatic Cancer – Cadmium-s, Cean, Hydrastasis, Calc-ars.

Intestinal Cancer – Cadm-met, Hydrastasis.

Ovarian Cancer – lach, Lili-T, Puls, Sep, Thuja, Conium.

Uterine Cancer – Cervix – Aurum Mu-N, Hydrast, Lach, Lili-T, Nat.m, Puls, Sepia

Uterine Cancer – Graph, Hydrs, Phos, Sep, Sil, Thuja, Murex, Lili-t, Lyco, Kreos, sil  
Con, Ars-i,

Breast Cancer – Bufo, Con, Graph, Merc, Asteria, Apis, Chim, Phyto,

Cancer of eyes – Calc, Laur, Phos, Lyco, Bell, Sep

Retinoblastoma – Gels, Ars, Merc, Phos, Calc.

Throat Cancer – Lach, Phos, Carb-an

Esophageal cancer – Con, Hydrast,

Lung Cancer – Lyco, Sang, Scirr.

Renal Cancer – Calc, Chim, Form, Sars, Solidago.

Prostatic Cancer – Con, Sabal, Lyco, Sel, Sulp, Thuja.

Rectal Cancer – Aloe, Ars-i, Nas-s, Nit-ac, Thuja, Merc, Kali-c.